

CHROMIS Occupational Medicine consults to a wide range of occupations and industries:



COMMENTS ABOUT OUR SERVICE

Chromis values your comments as they help us to improve our service. We have a simple, easy to fill out form, or perhaps you would prefer to complete a message on our website: www.chromis.com.au (click on contact then the 'please complete our enquiry form').

CONTACT DETAILS

MAITLAND

T 02 4936 9999 • F 02 4936 9900
1/605 High St, Maitland NSW 2320
PO Box 19, Lorn NSW 2320

NEWCASTLE

T 02 4952 5177 • F 02 4952 5188
Suite 7, Level 2, OTP House,
10 Bradford Close, Kotara NSW 2289

E admin@chromis.com.au

W www.chromis.com.au

Our hours of business are Monday to Friday
9am to 5pm.

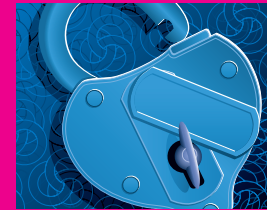
OUR NAME

We are named after a small fish whose name and characteristics we admire.



The pseudoChromis is a small and agile fish that lives in coral reefs throughout Australasia. Bright magenta and yellow, the Pseudo-Chromis is active and assertive and although small, it is not intimidated by larger more established species.

chromis
occupational medicine



PRIVACY & YOU

At CHROMIS, we are committed to safeguarding the privacy of patient information. Our policies comply with the Health Records and Information Privacy Act 2002 and Privacy Act 1988.

Collection

To provide the best possible medical advice, treatment and assessment, Chromis needs to collect accurate personal information from our customers.

Usually Chromis collects this information directly from you. In some instances, such as past treatment for an illness or injury, we may need to obtain information from other doctors or therapists. You will be asked to sign a form giving permission for release of this specific information to us.

Chromis takes all reasonable steps to protect information that we collect about you. Records are stored on paper and electronically and are only accessed by authorised Chromis staff members.

Disclosure

If you have been referred to Chromis by someone else, we will ask you to sign a consent form allowing us to provide a report about you to them. If there is information that you do not want released, you should discuss this with the doctor at the time of your assessment.

Sometimes, Chromis will discover a condition that requires urgent or further treatment or investigation by your doctor. You will be informed if this is going to be done and asked to sign a consent form giving permission for this.

Chromis is also required to comply with State and Commonwealth legislation. In certain situations, information must be released to the appropriate government agencies. We must release your information if it is subpoenaed by a court or tribunal.



Pre-Employment assessments

The assessment assists your potential employer and yourself by ensuring that you are fit for the inherent requirements of the job. Your potential employer will be notified of any appropriate job modifications that may assist you in employment. The assessment and examination may cover all systems of the body. You may be required to complete a medical history form before the examination. If you have any difficulties with any of the questions in the form, please discuss these with the examining doctor.

Chromis will make a written recommendation about your health and fitness for the duties for which you hope to be engaged. The final decision about your employment rests with the referring company.

What you can expect from our service

We are committed to providing a service that respects your dignity. We are committed to providing ethical, accurate and objective advice. Your assessment may require collection of blood and urine for additional tests. You may need to have breathing and hearing assessments or drug and alcohol testing.

During the physical examination, you may be required to remove your outside clothing, leaving on your underwear. You will be provided with a gown and/or chaperone if you wish.